

ROLLING MEADOWS 5TH ADDITION

ROLLING MEADOWS 6TH ADDITION

NE Corner
Sec 16-78-4

9.10
16.54
15

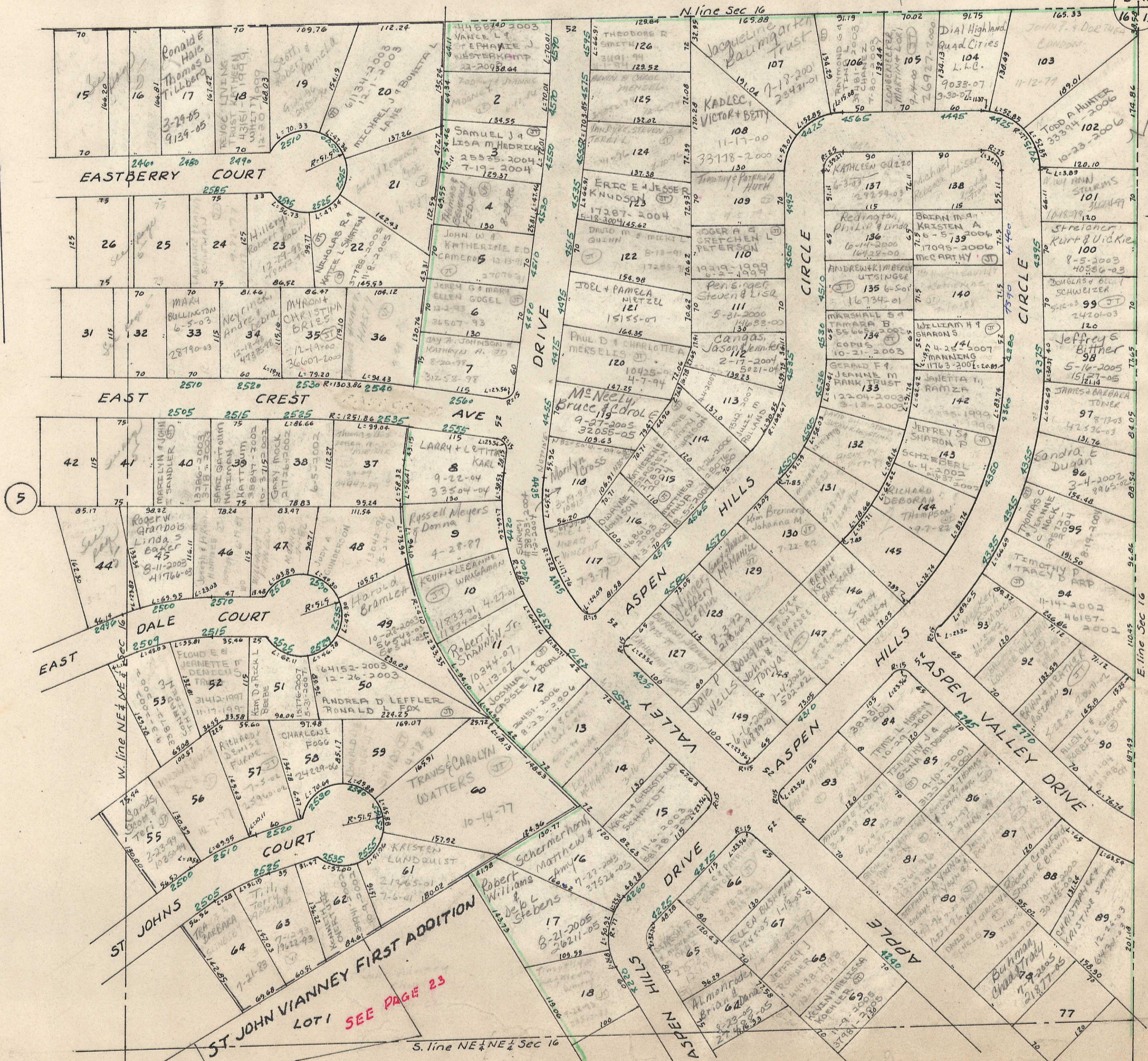
217L-1559(1-30)
217L-1560(31-64)
TRANSFER PAGE

1636(1-30)
1637(31-60)
1638(61-90)
1639(91-120)
1640(121-150)
1641(151-180)

TRANSFER PAGE 217L

SEC 15

1



LOT 1 SEE PAGE 23

LOT 2

23